

LEARNING BY EXAMPLE

ANALYZING THE FUNCTIONAL CONFORMATION OF THE THOROUGHBRED RACEHORSE

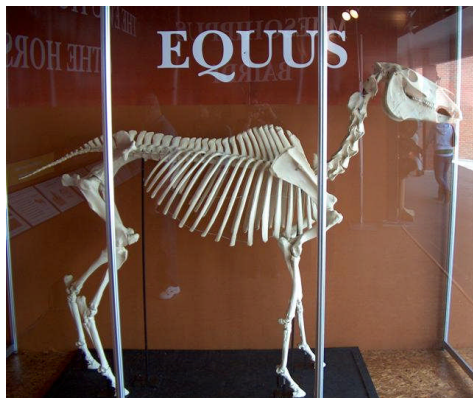
Written and Photographed
by

Judy Wardrope

www.jwequine.com

© 2009

All rights reserved





- The text and photos in this book are copyrighted, but by purchasing the e-book, you have permission to print one copy for personal use.



- It is my hope to make supplements available through the website (www.jwequine.com) on a regular basis – likely every year or two – that can be inserted.
- *Thanks to the handlers, grooms, trainers, owners, consignors and buyers who allowed their horses to be photographed. We all appreciate the ability to learn by their example.*

Information Sources:



- The Daily Racing Form's American Racing Manuals
- Blood-Horse Stallion Directories
- American Produce Records
- Brisnet.com
- Breederscup.com
- The Racing Post's Thoroughbred Stallion Guide
- Sales Catalogues (as printed when horse was photographed)

- **Photos © jwequine.com**
(copyrighted and not for reproduction)



INTRODUCTION

- The intent of this book is to provide information for anyone involved with Thoroughbred racehorses: breeders, buyers, trainers, riders, caregivers and even bettors.
- The horses photographed for this book were taken in England, Ireland and North America, but the actual horses originate in more countries than that.





- Many of the featured horses in this book ran in Breeders' Cup races. Others are by Breeders' Cup horses or have Breeders' Cup runners as their broodmare sires. Naturally there are racehorses included that exhibit various levels of ability and soundness as comparisons and contrasts.



- The thought is that if you are looking to breed the best, buy the best, train the best or bet on the best, studying the best makes the most sense.
- Do these horses run according to pedigree alone? Not necessarily, as we'll see throughout this book. That all animals differ slightly, even from their full siblings, is obvious, yet that fact is often dismissed as people judge by pedigree instead of by the individual's characteristics.
- But knowing how the individuals differ can help us select the right sibling for our purposes.



- Based on bone structure, we will identify such things as distance preferences, level of ability and soundness issues.
- Degree of talent, distance capabilities, surface preferences and susceptibility to unsoundness can be determined with a fair amount of accuracy by examining the horse's underlying structure and knowing the physics of movement.



- All movement is governed by the principles of physics. Imagine how knowing some of those principles and how they apply can improve your involvement with horses, and imagine how much better it will be for the industry as well as the horse if we apply them to breeding, selection and placement.
- Learning some of the major structural factors for both success and failure makes it possible to look at a standing horse and predict with a high degree of accuracy how that horse will move, assuming other factors – injury, temperament, illness, internal defect, etc. – are the same.